

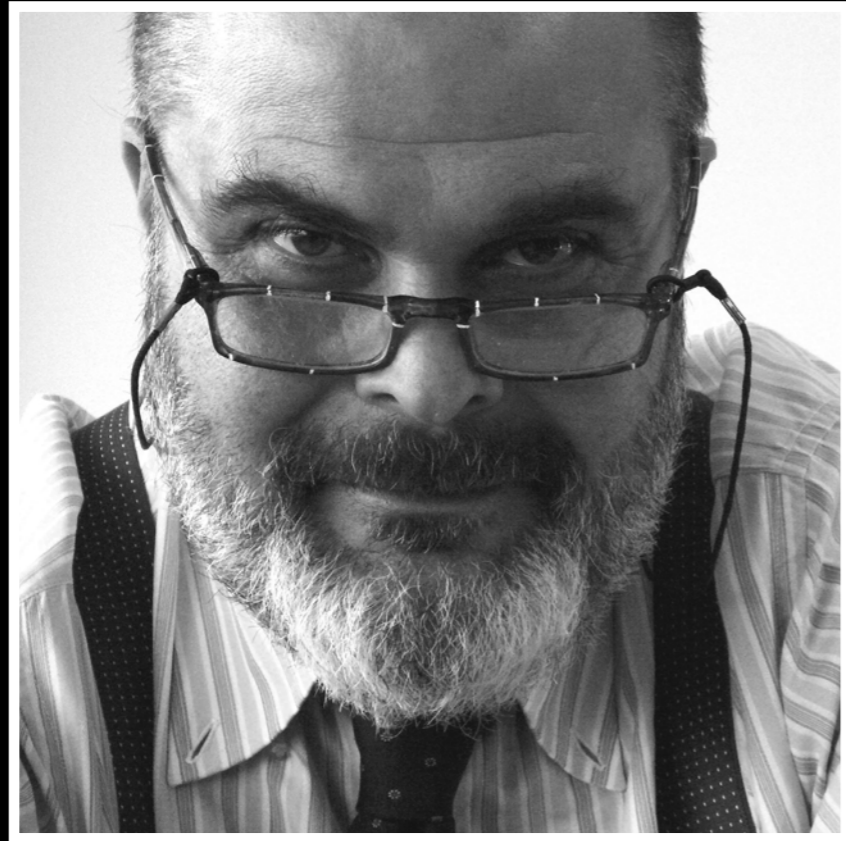
A woman in a white dress is captured in a graceful dance pose, floating in a vibrant green field under a dramatic, cloudy sky. This scene is framed by a dark doorway. In the foreground, the back of a person wearing a bright red hooded garment is visible, looking out towards the scene. The floor in the foreground is a black and white checkered pattern. Above the doorway, four small, square windows are arranged in a 2x2 grid, showing a blurred view of the outdoors.

PERSONAL EXHIBITION
OF THE ARTIST SPINA.POLICE
AND OF HIS ART COLLECTION
"THE DOOR TO THE GARDEN"
AT ITALIAN NEW YORK

Italian
NEW YORK
ARTEXPO

at the White Space Chelsea Gallery
555 W 25th St, New York, NY

2021 from **30th** august
to **3rd** september



The Artist

Spina.Police, interdisciplinary and creative Artist, “moves with extreme liberty in different directions of artistic expression. Such a various and original production, which stages, through different languages, the emotional universe of the Artist, made of sufferings, joy, memories, emotional paths, which the viewers understand emphatically, making these emotions their own, and thus interacting actively with the artistic production. The users are wrapped up in music, sometimes suggestive and enigmatic, and sometimes light and rhythmical, or fascinated by an image, dark and diaphanous, but in all this, his creations always captivate art users.”

(critica L. Zappulla)

Giovanni Spinapolice, artist known as Spina.Police, was born in Foggia in 1962. He lives in Rome. He graduated Law at the University of Rome “La Sapienza”, starting a brilliant career as a lawyer.

Since he was just a child, he was always passionate about music. At the age of seven he started playing the guitar, and he started drawing before the age of six, fantasizing with his pen or ballpoint pen on sheets of paper. He would draw the war adventure scenes or simply Mickey Mouse. Therefore, later on, he attended lessons of painting and music (he studied at the Music Conservatory of Foggia), without ever neglecting his school.

He worked as radio speaker and he was leader of some young rock bands, he wrote songs and made adverts for radio listeners in his small “homemade” registration studio, thanks to which, during his university years in Rome, apart from studying perspective of human anatomy and screenplay, with the supervision of “Lancio” Comics, he also participated at courses of directing with Silvano Agosti, and he started to compose music at the beginning of 1980s, which would be defined by the artist himself the “music for images”.

It was evocative, holistic and New Age music, and many years later it would become the “Rose Park” album. This album has been all over the world and it has many supporters. In the album, musical pieces don’t have lyrics, nor comprehensible titles, and this permits listeners’ carefree journey on “their own wings of fantasy”, as the Artist likes to say.

The sequel to the first album is “Umbra”, edited in 2009 (both albums released on Spotify and various web portals). As the necessary inspiration for the lyrics of “Umbra”, the author writes a theatre subject, a mystic story of a girl named Rose, who lives an interior drama of separation and grief.

The theme of double, of the inverse universe-the one enshrined in everyone, - of transcendent, of feminine- assume power in the songs of the Album, and in the author’s paintings, which he matches to his music, many single frames gathered from the story of “Rose”.

From here the collection “The door to the garden” originates, and it takes its name from the first installations, here exhibited, together with other paintings of the Personal Exhibition of Spina.Police at Italian New York Artexpo of New York.

“The artist’s research seems to privilege the themes of space and time. The three dimensions of Euclidean geometry- length, width and height- are mostly depicted in an unconventional manner in his works and this shifts the spectator’s attention from the subject to the context of the art work.

The same happens in the works of art of Escher, Picasso, De Chirico; these artists abandon the “mimetic representation” of the eventful reality and theorize the construction of the world by itself.

It seems that the artist Spina.Police wants to make the same kind of research introducing- as in cubism- the fourth dimension, i.e. time.

The eclectic character of the artist and the knowledge of different languages of expression, has permitted Spina.Police to reach some interesting results that are obvious in the installation “The door to the garden”.

There we find a recreated world, parallel universe to the reality; this is the context where all the characters of the narrated story shift, and the story is inspired by Leibniz “Every soul is the living mirror of the universe”.

It is clear that the peculiarity of this artist is his interdisciplinary; thanks to his multiple interests for music, comic books, direction and screenplay writing, he is able to compose the complex representations that are the result of his multiple artistic views.”

Vittorio Sgarbi
Art critic

“Spina.Police, is a volcano of creative energy, a restless spirit, whose hunger has to satisfy every aspect of his personal and artistic experimentation.

He moves with extreme freedom, through different aspects of the artistic expression from music, painting, video art, theatre, to becoming a creator of the totality, the one who invests all of the manifestations of his creative universe, into creation of unique and splendid works of art.”

Leonarda Zappulla
Art critic



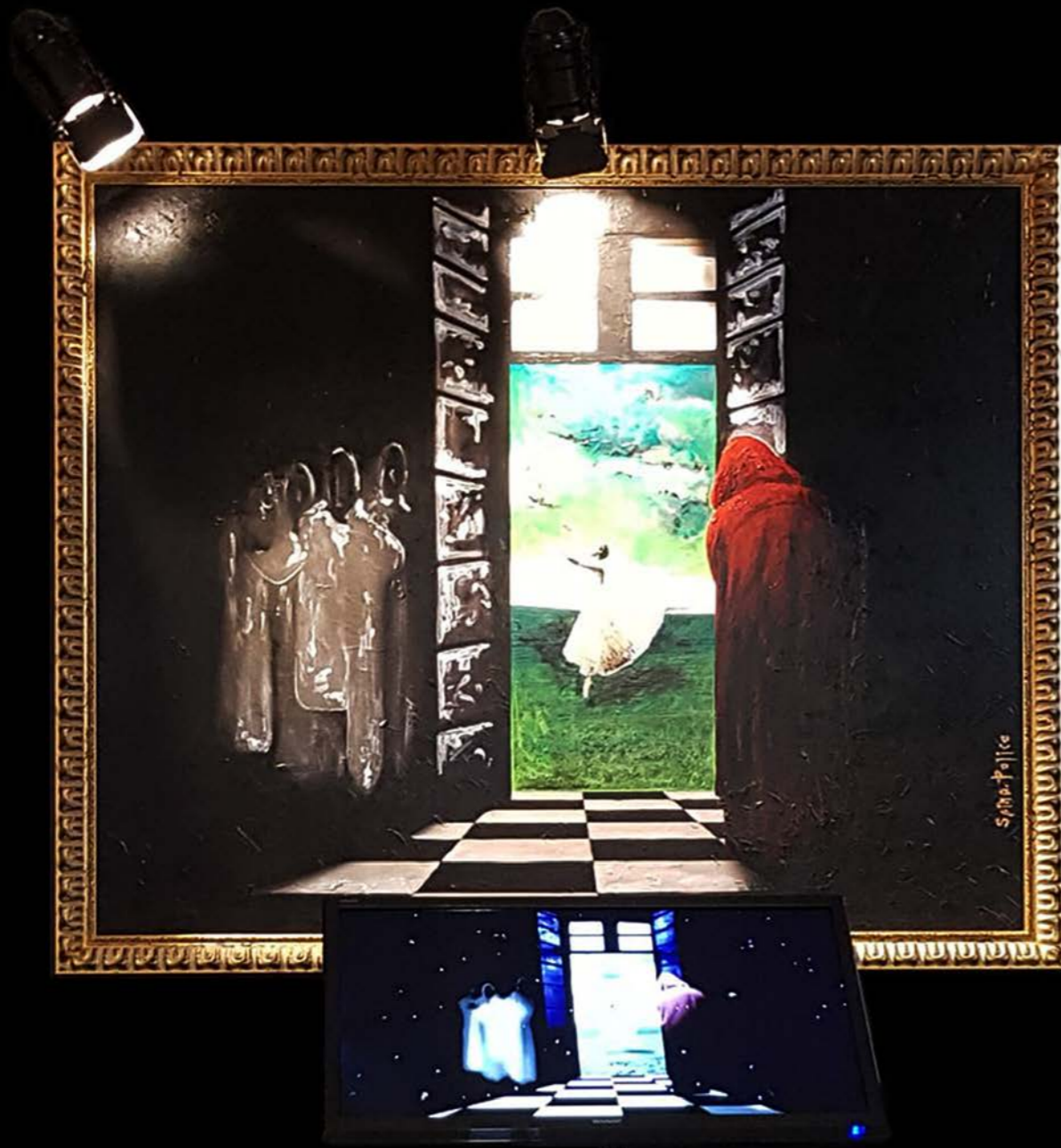
Vittorio Sgarbi
Art critic



Leonarda Zappulla
Art critic



PERSONAL EXHIBITION
OF THE ARTIST SPINA.POLICE
AND OF HIS ART COLLECTION
“THE DOOR TO THE GARDEN”
AT ITALIAN NEW YORK



THE DOOR TO THE GARDEN
installation art by Spina.Police

THE DOOR TO THE GARDEN
Multi-material painting on canvas 110x110
Installation art soundtrack "Le tisserand",
song from album "Rose Park" by Spina.Police

THE DOOR TO THE GARDEN

The installation art was already successfully presented to the public and the critics at the International Biennial of Normanni of Montreale (IT) and it is going to be exhibited in September 2021 in New York at the Gallery Agora in Manhattan, short distance from Times Square, together with other paintings of the same Artist. This work is a clear example of his art and his original manner to play with the perception, creativity and the emotional sphere, stimulated in order to let two realities run in parallel and both become real.

A painting on the wall becomes alive inside a monitor positioned beneath the painting, accompanied by the music for pianoforte which reminds of some sweet melodies (Artist's music composition).

Different artistic languages, painting, music and cinema blend in a story.

On the wall, the painting is in contrast with a digital element, an expressive togetherness capable of accompanying the viewer in a fantasy journey in the company of a girl. An ethereal creature, an imaginary heroine of the author's installations that moves through the door of the painting in order to start the journey into the world that goes beyond the painting, a pretext to meet her own soul, to make peace with it in order to become a part of the Universe. The circularity of the soul emerges from the short film as an archetype of a life's path that returns to its origin, a holistic journey intended to the definite conciliation of I and Myself.

The musical piece is a song from Rose Park album of Spina.Police, his first album (the second is Umbra) and it has been distributed all around the world.

The painting and the short film are the part of installation art "The door to the garden" (here exhibited), and are segments of series of Artist's works, multimedia installations, films and short oneiric and mystic stories accompanied by different paintings on canvas which become alive to the notes of musical compositions by the same Artist.



You can admire the painting together with its soundtrack, the music piece "The forest of Kaia", from the "Umbra" the album, through QR CODE.



Use QR CODE to see the filming.



THE DOUBLE
installation art by Spina.Police

THE DOUBLE

The Double is a synthetic representation of the anguish of Rose, the protagonist of the Personal collection "The door to the garden". In the theatre subject, written by the Artist, the girl chases for the whole of her adult life, her twin sister who died prematurely; as if wanting to reach her own double who could complete her. In the painting, the protagonist is tied to herself, represented by her sister, her double, separated symbolically from a mirror that shows sinister figures who are behind her and who represent the ghosts (fears, anguish, torments) of Rose.



You can admire the painting together with its soundtrack, the song "The Forest of Kaya", from the "Umbra" the album, through QR CODE.

Acrylic painting on canvas 100x100
Installation art soundtrack "The Forest of Kaya" song from the album "Umbra" by Spina.Police



A CRUEL GAME FOR HARMONY
installation art by Spina.Police

A CRUEL GAME FOR HARMONY

The dance of the opposites, as much as painful, is necessary in order to obtain harmony. The good and the evil contrast, but they possess the same essence, they compensate in a cruel and cynical game for the harmony. Rose dances by herself, and through the light and the darkness, dancing a tango through an infinite space, made of black and white, which radiates from the Golden section, "the key of the physics of the Universe" (Plato).



You can admire the painting together with its soundtrack, the song "A cruel game for harmony", from the "Umbra" album, through QR CODE.

Acrylic painting on canvas 188x85
Installation art soundtrack "A cruel game for harmony" song from the album "Umbra" by Spina.Police.



THE LIGHT
installation art by Spina.Police

THE LIGHT

“The Light” is a room suspended in the void, a metaphysical setting illuminated by a suspended light in the surrounding nothingness, that contains an ethereal and sensual creature, an imaginary heroine of many artist’s works. The room is a closed, inscrutable space, intimate and secret and it belongs only to the girl that occupies it. But we irreverently observe this intimate scene, the hidden world, and in a way, it seems to take the protagonist’s soul, the soul of the woman who exists only in our mind, but she may exist in the painting as well. “The Light” is the first of several paintings of the suspended room – the place where She thinks, dreams, desires, prays, where She is afraid, happy or sad, where She cherishes her motherhood.



You can admire the painting together with its soundtrack, the song “Status quo”, from the “Rose Park” album by Spina.Police, through QR CODE. . Two art languages, the painting and the music form a unique story that accompanies us to the fantasy world of the protagonist of the painting. Acrylic painting on canvas 188x85. Installation art soundtrack “A cruel game for harmony” song from the album “Umbra” by Spina.Police.



THE FALLEN ANGEL
installation art by Spina.Police

THE FALLEN ANGEL

The painting is the representation of fury, oblivion, repentance, fear, submission. The fallen angel symbolises the rebellion to its own condition, beautiful or ugly as it might be, and at the same time, the consequence of the choice, the desire of forgiveness and the consciousness of not being able to go back.



You can admire the painting together with its soundtrack, the music piece “Angelus habet clavem abyssi”, from the “Umbra” album by Spina.Police, through QR CODE.

Acrylic painting on double canvas 95x95 Installation art soundtrack “The Man and his story” song from the album “Rose Park” by Spina.Police

PERSONAL EXHIBITION
OF THE ARTIST SPINA.POLICE
AND OF HIS ART COLLECTION
“THE DOOR TO THE GARDEN”
AT ITALIAN NEW YORK

Italian
NEW YORK
ARTEXPO

at the White Space Chelsea Gallery
555 W 25th St, New York, NY
from 30th August to 3rd September 2021

SPINA.POLICE
INTERDISCIPLINARY ARTIST

ITALIA - 00186 ROMA - 13, Via del Grottino

Official Site:
www.spinapolice.art



You can contact the Artist at:
spinapolice@spinapolice.art

 **MFI**
MUSIC FOR
IMAGES
Productions

